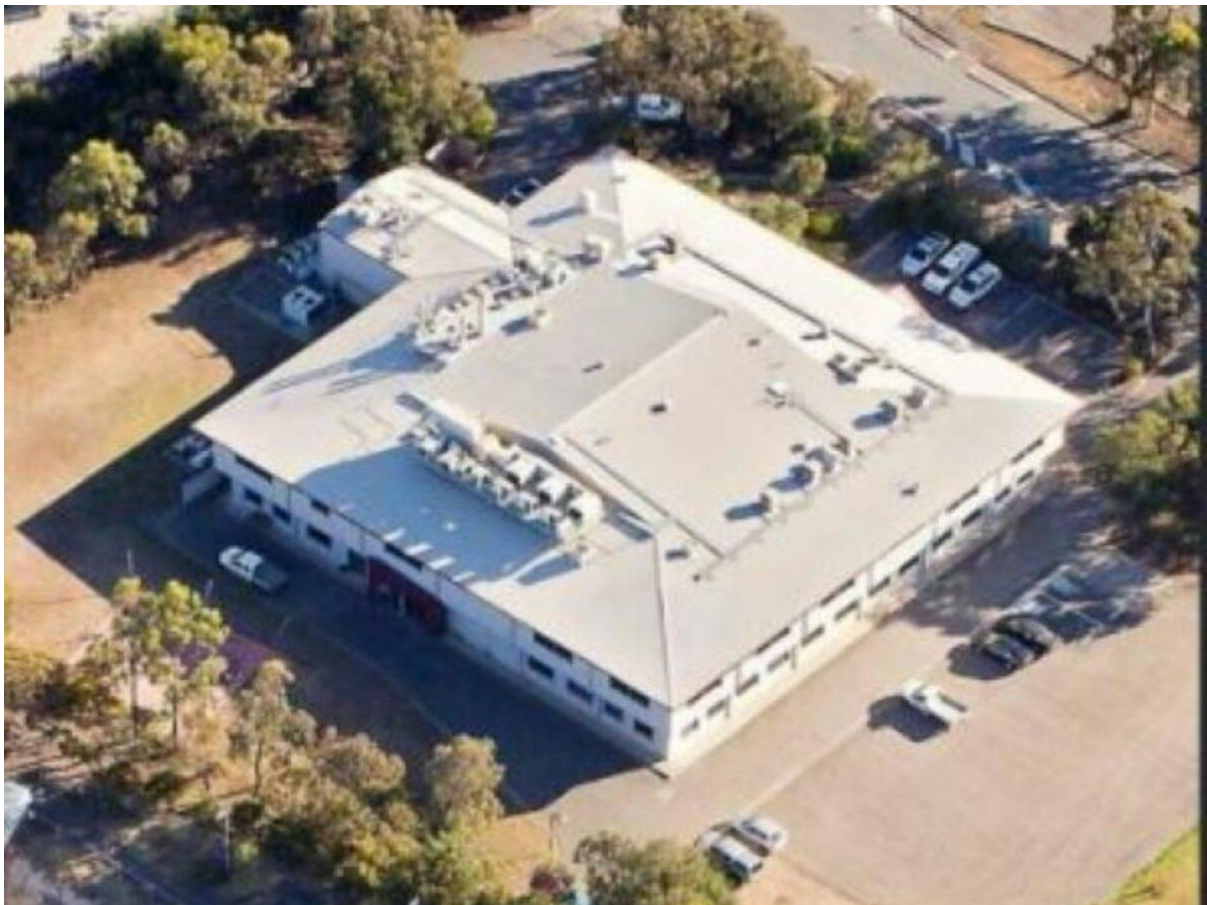




22 Jan 23
By Peter Roberts

REDARC buys historic factory for defence technology push



Fast growing electronics manufacturer REDARC has purchased an historic Adelaide factory to house staff spearheading its move into the defence and space sectors.

Owner Anthony Kittel has confirmed the company purchased the Lonsdale facility that formerly housed the once world-leading R&D operations of Sola International Holdings.

Kittel took to social media and said: "Exciting times ahead for Scott Begbie and our REDARC Defence & Space Team as we Master Plan the site of our future Global Centre for Excellence Defence & Space in South Australia."

Begbie is Executive General Manager of the company's defence and space business.

The new facility is a double story office building with 3,529sqm of floor area on a 1.238ha allotment with further development potential.

[Scientific Optical Laboratories of Australia](#) (Sola Optical), a division of Laubman & Pank, didn't invent plastic spectacle lenses but they were the first to successfully mass produce them.

The company invented the mass manufacture of CR-39 plastic spectacle lenses in the 1960s – becoming the world's largest manufacturer of plastic spectacle lenses in the process.

"The site was originally developed as the global research centre for Sola International Holdings Limited.

"Stay tuned as we are developing some exciting plans to restore the site to its former glory as the Global Centre for Excellence REDARC Defence & Space."

Further reading:

[Search for CRC industry partners – Professor Colin Hall](#)

[Defence partnering for success – REDARC, SMEs partnering with SMEs](#)

Picture: REDARC